

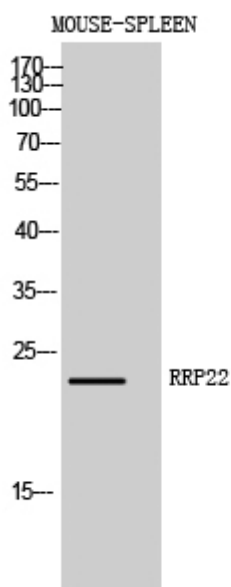


RRP22 Polyclonal Antibody

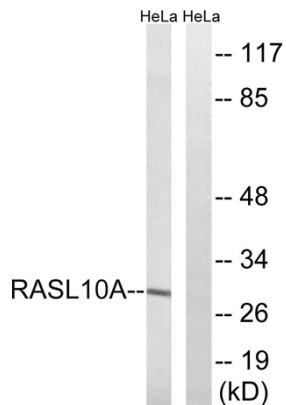
Catalog No	YP-Ab-16248
Isotype	IgG
Reactivity	Human;Mouse
Applications	WB;ELISA
Gene Name	RASL10A
Protein Name	Ras-like protein family member 10A
Immunogen	The antiserum was produced against synthesized peptide derived from human RASL10A. AA range:107-156
Specificity	RRP22 Polyclonal Antibody detects endogenous levels of RRP22 protein.
Formulation	Liquid in PBS containing 50% glycerol, 0.5% BSA and 0.02% sodium azide.
Source	Polyclonal, Rabbit,IgG
Purification	The antibody was affinity-purified from rabbit antiserum by affinity-chromatography using epitope-specific immunogen.
Dilution	Western Blot: 1/500 - 1/2000. ELISA: 1/40000. Not yet tested in other applications.
Concentration	1 mg/ml
Purity	≥90%
Storage Stability	-20°C/1 year
Synonyms	RASL10A; RRP22; Ras-like protein family member 10A; Ras-like protein RRP22; Ras-related protein on chromosome 22
Observed Band	30kD
Cell Pathway	Cell membrane ; Lipid-anchor ; Cytoplasmic side . Nucleus, nucleolus . May cycle in and out of the nucleolus in a GTP-dependent manner.
Tissue Specificity	Expression appears to be strictly limited to the central nervous system.
Function	similarity:Belongs to the small GTPase superfamily. Ras family.,
Background	similarity:Belongs to the small GTPase superfamily. Ras family.,
matters needing attention	Avoid repeated freezing and thawing!
Usage suggestions	This product can be used in immunological reaction related experiments. For more information, please consult technical personnel.



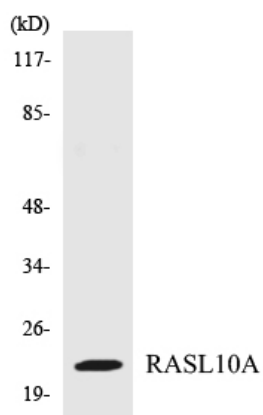
Products Images



Western Blot analysis of MOUSE-SPLEEN cells using RRP22 Polyclonal Antibody diluted at 1:1000



Western blot analysis of lysates from HeLa cells, using RASL10A Antibody. The lane on the right is blocked with the synthesized peptide.



Western blot analysis of the lysates from 293 cells using RASL10A antibody.